



**STEAM BOILERS MODEL**  
**WetBack**

# STEAM BOILERS



Designed and Constructed  
to Suit the Needs of  
Your Company

Model

## WetBack

WET POSTERIOR  
CHAMBER, GAS  
RETURNER

And  
Corrugated  
Furnace



The Quality of our Products is Backed by the ASME Code   
and Certifications: , , and , and also  
complies with NOM-020-STPS-2002



# BURNERS

**Complementary part  
of the boilers  
In all types and  
capacities**



**Environmental  
Equipment and  
Proven High Efficiency**

**With Emissions well below the NOM-085-ECOL-1994  
and Certifications: UL, FM and IRI.**

## SELF CARBURATION SYSTEM

**To Run Through Oxygen Sensors**



# Sustainable Technology and



## Design

Engineering  
experience to  
solve any need



## Manufacturing

Infrastructure to  
produce equipments  
with capacity up to  
1500 HP



## Installation

Assembly  
Commissioning  
and Training

# and Environmentally Friendly



**Service**  
24 hours a day,  
365 days a year  
and spare parts  
throughout the  
Mexican Republic



# GENERAL

BOILER HORSEPOWER		80 HP	100 HP	125 HP	150 HP	200 HP	250 HP
KCAL OUTPUT	KCAL./HR	674,856.00	843,570.00	1,054,463.00	1,265,355.00	1,687,140.00	2,108,925.00
	BTU OUTPUT 1000X	2,678.00	3,347.50	4,184.38	5,021.25	6,695.00	8,368.75
RATED CAPACITY (212° F)	KG./HR.	1,253.00	1,566.30	1,957.88	2,349.45	3,132.60	3,915.75
	LBS./HR.	2,760.00	3,450.00	4,312.50	5,175.00	6,900.00	8,625.00
HEATING SURFACE	MTS. <sup>2</sup>	37.16	46.45	58.06	69.98	92.90	116.13
	FT. <sup>2</sup>	400.00	500.00	625.00	750.00	1,000	1,250.00

## BOILER DIAMETER

DIAMETER OF BOILER		A	67"	67"	72 7/8"	72 7/8"	84 5/8"	84 5/8"
LENGTHS	OVERALL	B	16' - 1"	18' - 7 1/4"	17' - 5 7/16"	20' - 9 1/4"	20' - 5 5/8"	24' - 2 3/16"
	BASE FRAME	C	11' - 9"	14' - 2 7/8"	12' - 10 3/4"	15' - 10 3/16"	15' - 5"	18' - 9 3/16"
	BOILER	D	12' - 4 11/16"	14' - 10 3/4"	16' - 8 3/4"	15' - 10 1/2"	15' - 9 3/8"	18' - 10 3/8"
WIDTHS	OVERALL	E	75 9/16"	75 9/16"	82 5/16"	82 5/16"	101 3/16"	101 3/16"
	BASE, OUTSIDE	F	61 13/16"	61 13/16"	68 1/8"	68 1/8"	80"	80"
HEIGHTS	OVERALL	G	7' - 9 11/16"	7' - 9 11/16"	8' - 5 9/16"	8' - 5 9/16"	9' - 5"	9' - 5"

## BOILER CONNECTIONS

DIAMETER	STEAM NOZZLE	J	3"	3"	3"	* 4"	* 4"	* 6"
	NOMINAL FEEDWATER	K	1 1/2"	1 1/2"	1 1/2"	1 1/2"	2"	2"
	STACK	L	16"	16"	18"	18"	20"	20"
	DRAIN, F & R	M	2"	2"	2"	2"	2"	2"

## POWER REQUIREMENTS

MOTOR	BLOWER	HP.	5	5	7 1/2	7 1/2	15	15
	FEEDWATER PUMP	HP.	5	5	5	7 1/2	7 1/2	15

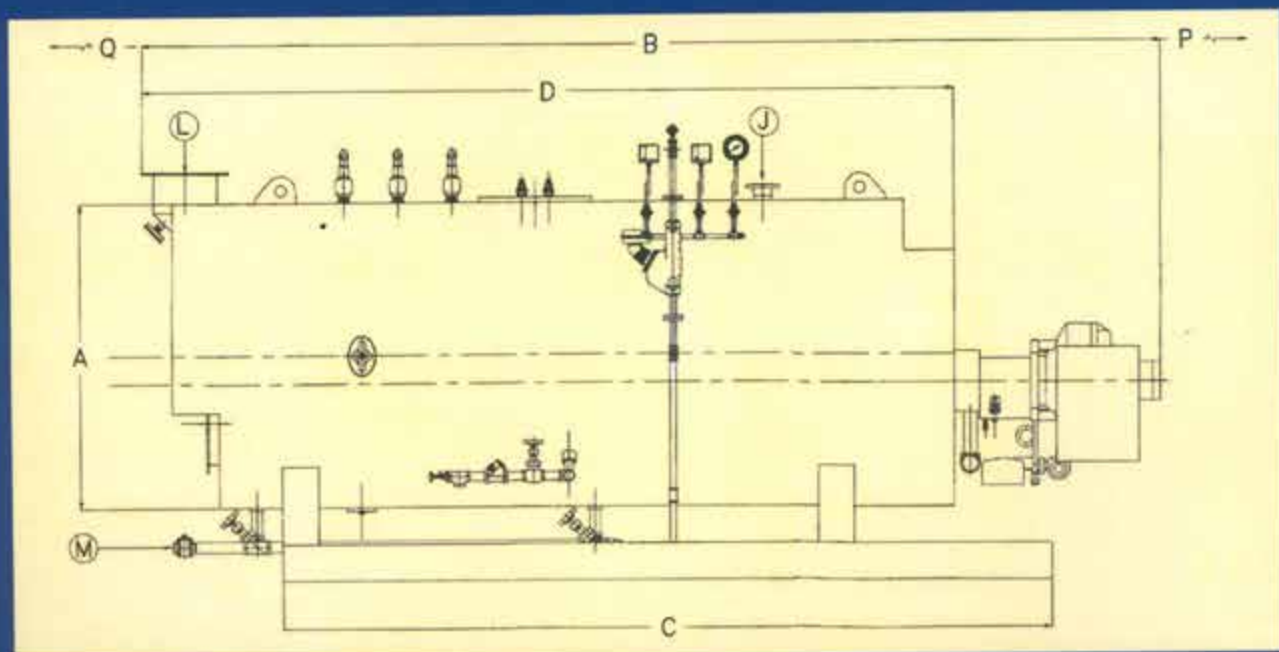
## BOILER ROOM

MINIMUM CLEARANCES	TUBE REMOVAL F	P/Q	6' - 6 3/4"	9' - 1"	8' - 2 1/2"	10' - 1 1/4"	9' - 9"	12' - 2 7/8"
	REAR DOOR SWING	R/S	6' - 2 3/8"	6' - 2 3/8"	2' - 7 7/8"	3' - 3 3/8"	3' - 3 3/8"	6' - 9 7/8"
	TOP	T	3' - 3 3/8"	3' - 3 3/8"	3' - 3 3/8"	3' - 3 3/8"	3' - 3 3/8"	4' - 11"

## APPROX. WEIGHT

APPROX.	SHIPPING	LBS.	13,820	16,740	16,740	21,234	27,533	33,965
	AT NWL	LBS.	19,075	23,106	23,106	29,296	38,657	46,291
	WEIGHT FLOODED	LBS.	20,111	24,359	24,359	30,899	42,450	52,331

\* FLANGED CONNECTIONS 150# R.F.



# DIMENSIONS

300 HP	350 HP	400 HP	500 HP	600 HP	700 HP	800 HP	900 HP	1,000 HP	1,200 HP	1,500 HP
2,530,710.00	2,952,280	3,374,280.00	4,217,850.00	5,061,420.00	5,904,990.00	6,748,560.00	7,592,130.00	8,435,700.00	10,122,840.00	12,653,550.00
10,042,500.00	11,716,250.00	13,390.00	16,737.50	20,085.00	23,432.50	26,780.00	30,127.50	33,475.00	40,170,000.00	50,212,560.00
4,698.90	5,482.05	6,265.20	7,831.50	9,397.80	10,964.10	12,530.40	14,096.70	15,663.00	18,792.60	23,490.00
10,350.00	12,075.00	13,800.00	17,250.00	20,700.00	24,150.00	27,600.00	31,050.00	34,500.00	41,392.00	51,740.00
139.35	162.58	185.80	232.26	278.71	325.16	371.61	418.06	464.51	557.36	696.70
1,500.00	1,750.00	2,000.00	2,500.00	3,000.00	3,500.00	4,000.00	4,500.00	5,000.00	6,000.00	7,500.00

## BOILER DIAMETER

91 3/8"	91 3/8"	101 3/16"	101 3/16"	117 5/16"	117 5/16"	117 5/16"	117 5/16"	131' 1/2"	131' 01/2"	147' 0 5/8"
22' - 1"	24' - 4 1/2"	25' - 8 1/4"	27' - 5 1/8"	25' - 11"	30' - 2 9/16"	30' - 2 9/16"	28' - 1/4"	30' - 2 1/4"	36' - 1 7/8"	33' - 8 11/16"
16' - 4"	18' - 5 5/8"	18' - 10 3/8"	22' - 3/16"	17' - 5 1/2"	21' - 2"	21' - 10 1/4"	21' - 9 13/16"	23' - 9 7/16"	26' - 2 31/32"	26' - 0 3/64"
17' - 3 1/2"	18' - 8 7/16"	19' - 5"	21' - 4 3/8"	19' - 7 7/16"	21' - 11 3/8"	24' - 3/16"	22' - 3/16"	24' - 3/16"	27' - 5 23/32"	25' - 0 1/2"
107"	107"	109 1/2"	116 1/2"	133 1/16"	133 1/16"	133 1/16"	153 3/16"	153 3/16"	141' - 47/64"	170' - 21/32"
87"	87"	83 7/8"	83 7/8"	90 3/16"	90 3/16"	90 3/16"	90 3/16"	90 3/16"	90' - 0 1/2"	102' - 53/64"
9' - 10 1/8"	9' - 10 1/8"	11' - 6 3/16"	13' - 5 13/16"	12' - 10"	14' - 4 13/16"	14' - 4 13/16"	13' - 9"	13' - 9"	161' - 31/32"	213' - 03/16"

## BOILER CONNECTIONS

* 6"	* 6"	* 6"	* 6"	* 8"	* 8"	* 8"	* 8"	10"	10"	12"
2"	2"	* 2 _ "	* 2 _ "	* 2 _ "	* 2 _ "	* 2 _ "	* 2 _ "	* 2 _ "	2 1/2"	3"
24"	24"	30"	26"	30.00	30"	30"	30"	30"	30"	36"
2"	2"	2"	2"	2"	2"	2"	2"	2"	2"	2"

## POWER REQUIREMENTS

25.00	30.00	30.00	40.00	60.00	60.00	60.00	60.00	60.00	75.00	100.00
15.00	20.00	20.00	20.00	20.00	25.00	25.00	30.00	30.00	40.00	40.00

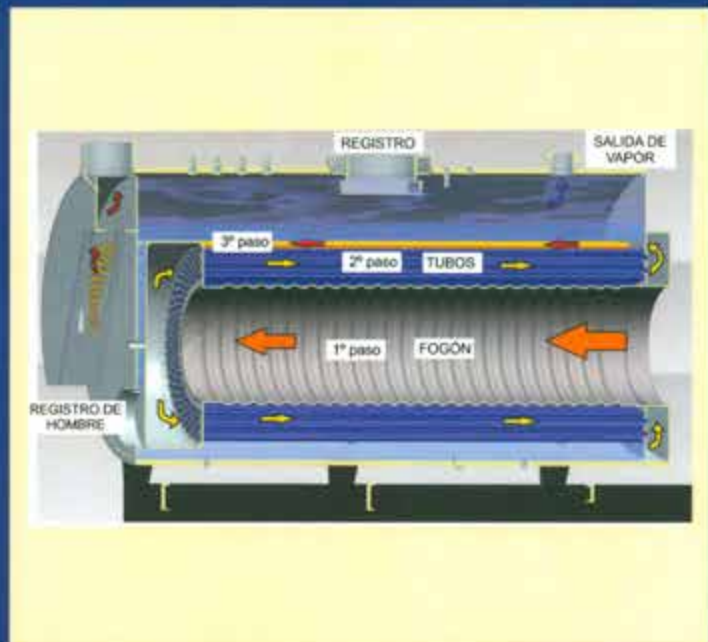
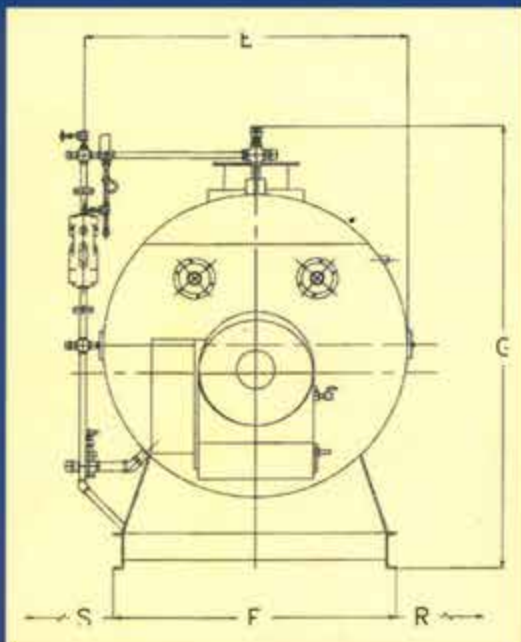
## BOILER ROOM

9' - 3 7/8"	12' - 9 1/8"	12' - 11 1/8"	11' - 11 3/4"	11' - 11 3/4"	11' - 11 3/4"	17'	12' - 10 3/4"	14' - 8 3/4"	15' - 5 51/64"	15' - 11 3/4"
3' - 3 3/8"	3' - 3 3/8"	4' - 4"	4' - 4"	4' - 4"	4' - 4"	4' - 4"	4' - 4"	4' - 4"	4' - 4 13/32"	5' - 1 9/64"
4' - 11"	4' - 11"	6' - 1/2"	6'	6'	6'	6'	6'	6"	8' - 8 13/32"	9' - 6 11/32"

## APPROX. WEIGHT

35,952.00	37,941.00	40,672.00	47,822.00	63,681.00	68,282.00	77,093.00	81,498.00	88,899.00	107,048.00	132,159.00
53,926.00	57,221.00	65,033.00	77,359.00	98,357.00	106,007.00	120,826.00	129,630.00	142,271.00	171,691.00	198,238.00
58,421.00	61,976.00	74,285.00	88,577.00	108,793.00	117,359.00	133,987.00	147,243.00	161,800.00	193,172.00	220,264.00

Nos reservamos el derecho de modificar el diseño de nuestras calderas sin previo aviso.



**With 100%  
Mexican capital and  
technology, actively participate  
in the development of the  
country's economy and the  
international market.**



*Since 1957*

**CALDERAS MYRGGO, S.A. DE C.V.**

Av. San Sebastián 905, Fracc. Valles de Linda Vista

Cd. Guadalupe, N.L., 67130, México

Tels. (81) 8377-6550, 8377-6570, 8377-6623

Fax: (81) 8377-8870

myrggo@myrggo.com.mx

**www.myrggo.com.mx**